

Flowmeter

DHGF-10



H₂O

OVERVIEW

Operation

- Impeller

Application

- Mechanical engineering
- Pharmaceutical industry
- Chemical industry
- Research & Development

Features

- Universal orientation
- High accuracy
- Pulse output
- High chemical resistance (ECTFE-Version)
- Threaded connection

Installation information

- The installation of the flowmeter can be done in any way in the system. The optimum aeration will be achieved when mounted vertically. The flow direction must be observed.
- The flowmeter must not be used as a supporting part in a pipe construction.
- The medium must not contain any solids.
- External magnetic fields influence the measurement. Keep sufficient distance to magnetic fields (e.g. electric motors).
- **Download: www.meister-flow.com**

OPERATING DATA

Operating pressure, max.	6 bar
Burst pressure (22 °C)	> 15 bar
Operating temperature	0 °C - 80 °C
Measuring accuracy	± 2 % of measured value ⁽¹⁾
Repeatability	< ± 0,8 % of measured value ⁽¹⁾
Viscosity range	1 - 10 cSt
Sensing principle	Hall effect, contact-free measuring technique

⁽¹⁾ Under the same operating conditions

MEASURING RANGES

Type	Measuring range for H ₂ O at 22 °C	
	l/h	Version
DHGF-10	50 – 1000 ⁽²⁾	POM
DHGF-10	80 – 1000	ECTFE

⁽²⁾ Optional (with ceramic bearing) 80 - 1000 l/h

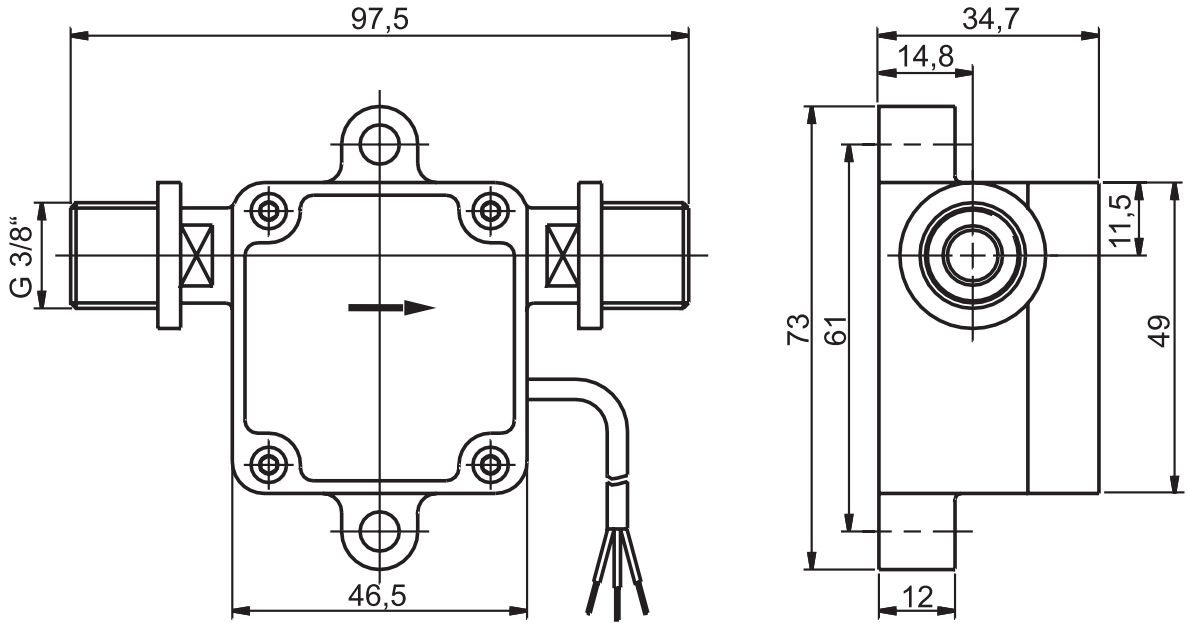
MATERIALS

POM version	
Sensor housing:	POM
Impeller:	POM
Bearing (spigot bearing)	
standard (Axle / Bearing):	Corepoint® / POM
optional (Axle / Bearing):	Ceramic / Ceramic
Magnets:	POM - encapsulated
O-Rings:	FKM or EPDM ⁽³⁾
Weight:	approx. 80 g
Process connection:	Threaded G 3/8"

ECTFE version	
Sensor housing:	ECTFE
Impeller:	ECTFE
Bearing (spigot bearing)	
standard (Axle / Bearing):	Ceramic / Ceramic
optional (Axle / Bearing):	---
Magnets:	ECTFE - encapsulated
O-Rings:	FKM or EPDM ⁽³⁾
Weight:	approx. 140 g
Process connection:	Threaded G 3/8"

⁽³⁾ FKM: green color code / EPDM: black color code / KALREZ® (optional): white color code

TECHNICAL DRAWING



ELECTRICAL DATA

Power supply	4,5 - 24 VDC
Output signal	Square wave push-pull output stage
Max. output current (at 24 V)	11 mA

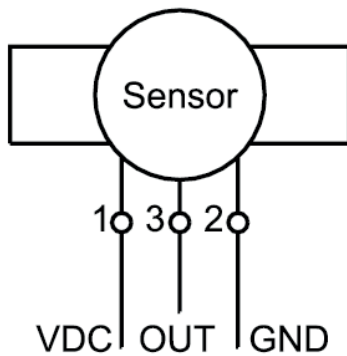
ELECTRICAL CONNECTION

- Cable (1 m)
Round cable 3 x 0,14 mm² LIYY

Ingress Protection

IP65

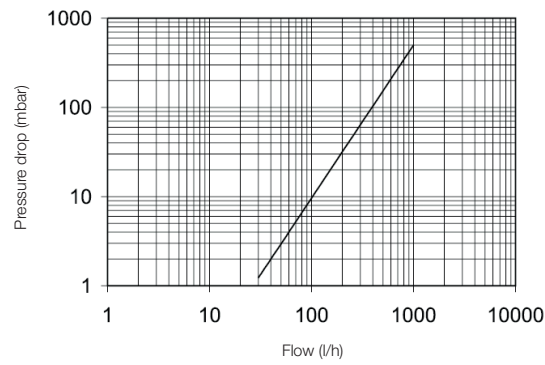
CONNECTION DIAGRAM



1:	VDC	white
2:	GND	brown
3:	OUT	green

DIAGRAMS

Pressure drop diagram



Pulse characteristic curve

